



TRANE®

Tracer Summit®

Building Management
System





Tested. Proven. Trusted...

*In over 35,000
Properties Worldwide*



Billing VAV 3-76


More Details Sorted As...

- Setpoints
- Manual Controls
- Unit Summary
- Diagnostics

Home | Back

Engineering Lab 3-66

Generic VAV No Fan, No Heat



Present Value
Space Temperature
Active Cool Setpoint

Occupied
0.0 °F
0.0 °F

More Details...

Home | Back

Setpoints: Engineering Lab 3-66

Active Mode: Cooling

Occupied Cool Setpoint: Ref	74.0 °F
Occupied Heat Setpoint: Ref	71.0 °F
Unoccupied Cool Setpoint: Ref	85.0 °F
Unoccupied Heat Setpoint: Ref	60.0 °F

Page 1 of 2

Home | Back | Refresh | Down Arrow

© 2006 American Standard All rights reserved

TM © The following are trademarks or registered trademarks of American Standard:
Trane, Tracer, the Trane logo, Tracer Summit, Integrated Comfort, Tracer Summit Energy Services, Tracer ES.

TM © The following are trademarks or registered trademarks of their respective companies or organizations: BACnet of American Society of Heating, Refrigerating and Air-Conditioning Engineers (ASHRAE); LonTalk of Echelon Corporation.



11:48 AM

Thursday

Outside Air Temperature
Outside Air Humidity



View



Alarms



Schedule



Timed
Override

Trane was the first to introduce factory-mounted and commissioned controls. Of course, imitators followed. But none had the seamless combination of equipment and controls that Trane was able to deliver. Because only Trane has over

20 years of experience designing, engineering and manufacturing both the equipment and the controls — for a fully integrated system. And Trane continues to lead the way with innovative solutions for building automation and control.

Over 35,000 buildings around the world trust Tracer Summit for the level of system-wide control that leads to dramatic energy savings, improved staff productivity, increased occupant comfort and better indoor environmental quality (IEQ).



Tracer Summit – the brains behind smart buildings.



Operators can use a PC via the Internet or a local area network to access and communicate with Building Control Units. These BCUs link with HVAC equipment and other building systems.

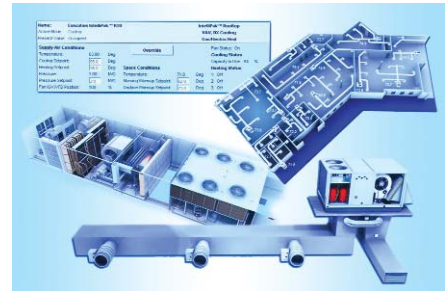
The Tracer Summit® building management system is the result of 90 years of innovation in the heating and air conditioning industry. It's the result of fearless leadership in an industry that continues to rapidly evolve with new technologies and increased demand for energy savings as well as occupant comfort, IAQ and staff productivity.

It's the result of a team of engineers who are committed to pushing the envelope of new technologies in search of ways to make managing buildings easier, more intuitive and effective – to produce better results.

Tracer Summit is a powerful facility management system that gives you complete control of your building right from the Building Control Unit (BCU), your PC workstation or the Web. Imagine being able to perform all of your daily operations from one place...with simple point-and-click precision:

- *Change system set points*
- *View system alarms and event logs*
- *Answer alarms and troubleshoot problems*
- *Perform timed overrides, simply and quickly*
- *Make changes to Time of Day scheduling*
- *Manage your chiller plant*

That's the beauty of Tracer Summit. It's a window into all your building systems, subsystems and equipment. And best of all it has an intuitive graphical interface that lets your staff learn how to set up and use the system quickly, and perform tasks easily and productively.



Tracer Summit was designed to monitor and control your building for optimum indoor environmental quality and comfort. And you can do it your way. Its standard configuration gives you all the tools to manage daily operations, complete with an exhaustive palette of 3D graphics that give you real-time, lifelike views of your system.

With Tracer Summit, every piece of equipment and every control throughout your building is displayed and easily understood. All made possible because it is one of the few building control systems that is compatible with other manufacturers' control systems, based on a number of open standard protocols. In short, Tracer Summit plays well with others, so it's your best bet for a long-term investment.



Take the Tour

Quickly learn the daily operator functions of navigation, scheduling, reporting, event log access and more. You'll discover Tracer Summit is as easy as surfing the web.



Smarter Reporting

Integrated Comfort™ —Your turnkey solution

Trane can deliver a comprehensive ICS because Trane has all the key components that make up the entire solution. ICS is comprised of Trane HVAC equipment, integral unit controllers and building management – all designed and commissioned with Trane application expertise to provide comfort, efficiency and reliability, as well as single-source warranty, parts and service.

The ICS approach offers lower installation costs, in many cases because the HVAC units have turnkey factory-installed controls and every component of the system is designed to fit together. Plus, it's easier to own the system because it's manufactured, installed, extensively tested at our plant and on site, warranted and serviced by a single source – Trane. The name that over half the buildings in North America trust today.

Tracer Summit opens the door to the data rich power of Trane Unit Control Modules (UCMs) allowing operators to employ all the building data for better facility-wide control.

A graphical user interface gives you instantaneous data on virtually any aspect of your system and is constantly storing that data for future reporting. You can tap that information at any time to create trends, data rich reports, or use it to tailor cost, consumption and status information. This data is critical for diagnostics and troubleshooting, which becomes an integral part of any comprehensive, proactive maintenance program. You'll actually identify potential problems before they turn into major breakdowns.

Tracer Summit's application programs turn complex requirements into simple, consistent, reliable operations. It can control equipment from other manufacturers, but when linked to Trane HVAC units, you enjoy the additional benefits of Trane's comprehensive Integrated Comfort™ Solution.

Tracer Summit allows you to visually monitor building status from your workstation in a fraction of the time it traditionally takes.

Tracer Summit software uses BACnet®, the ASHRAE standard communication protocol for the entire industry. This makes it one of the few building automation systems built on an open architecture, enabling communication with any BACnet-compatible device or system.

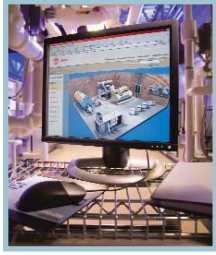
No matter what kind of HVAC equipment you have in your facility, as long as it's BACnet compatible*, you can control it smarter, easier and more efficiently with Tracer Summit as the brains of your operation. This gives building professionals the freedom they need today to take greater control of building automation and the assurance that their investment will continue to yield a solid return on their investment for years to come.



* Tracer Summit is also compatible with LonTalk® for communication between HVAC and other unit types and Modbus for industrial process control.



Multiple Buildings?



One Solution. Tracer ES!

If you have multiple buildings throughout a campus, across town or around the world, Tracer ES™ is your solution for taking total control of building automation.

With Tracer ES you get all the control of Tracer Summit packed into a dynamic web-based program that lets you monitor and manage each and every building from anywhere you have Internet access. In addition, Tracer ES can communicate with any industry-standard BACnet-compliant product. Now that's total freedom.

You get the power to fulfill all your daily operations, answer and respond to alarms, make scheduling changes, create maintenance schedules, develop reports and much more — for multiple buildings, in multiple locations all from one place. And that could be anywhere. At anytime.

Your facility at your fingertips

The Tracer Summit Building Control Unit features an optional screen that lets users easily navigate through the entire Tracer Summit building automation system with their fingertips.

Virtually every daily operation that can be done at the PC workstation can be accomplished

through the touch screen... adjust schedules, change set points, answer alarms and much more.

This useful feature makes it easier and quicker to make adjustments and saves the building operator the headache of running back to their workstation each time a minor change needs to be made.

Value Added Modules

Although Tracer Summit is the most comprehensive building management solution in its standard configuration, we have developed Value Added Modules that enhance the communication and scope of the system for larger enterprises and specialty applications.

Tracer Summit Energy Services™

Manage energy, operations and expenses more efficiently.

Critical Control System

Provides extremely detailed reporting and data storage for FDA compliance.

Tracer 100/Tracker Communication Package

Communicate with legacy panels and new BCUs through one workstation utilizing Tracer 100 scheduling and Tracker alarm and reporting.

Building Management

Ideal for operators managing from four to eight sites or 10 to 15 Building Control Units (BCUs)

Enterprise Management

Perfect for owners of multiple facilities like school districts, college campuses and hospital campuses.



Trane
A business of American Standard Companies
www.trane.com

For more information, contact your local Trane office or e-mail us at comfort@trane.com

Literature Order Number	BAS-SLB020-EN
Date	July 2006
Supersedes	New
Stocking Location	Inland

Trane has a policy of continuous product and product data improvement and reserves the right to change design and specifications without notice.